

# *Minarik Guitars*

MMXVIII



The most  
important  
component of a  
Minarik Guitar  
is  
passion



Passion to use the finest materials possible. Passion that turns to obsession to make you a guitar that blows you away EVERY TIME you play it.

Passion to create the finest quality instrument available, anywhere.

What is the result of our Passion?

Passionate Customers!

Our company consists of two primary sections.

## *Super Custom Series*

Our Super Custom Series guitars and basses are all hand built in the United States. Founder M.E.Minarik's vision of advancing the sonic technology of instrument construction began in our custom shop. That heritage continues today with specialists in their particular fields working together to bring you a one of a kind handbuilt instrument of your own specifications.

## *Studio X-treme Series*

Our Studio X-treme Series guitars and basses are designed to bring our technologies to market in a more affordable package. Our close working relationship with our overseas manufacturing partners has made it possible for our import instruments to achieve the sonic ranges of their big brothers coming out of our custom shop, at a fraction of their costs.

Minarik Guitars proudly offers Five of our most popular designs in standard configurations and a variety of finishes.

Check with your dealer for color and availability. Join us on facebook or at [minarikguitars.com](http://minarikguitars.com) for updated specs and specials.

The Absinthe's hollow-body is the perfect opportunity to allow your unique playing ability to breathe through an entirely new medium. The beautiful traditional curves of the Absinthe are a joy to behold, however it is the sound holes that create the magic on this particular instrument. These completely new and original sound holes are inspired from Native American and Alaskan historical artifacts. They are, in a way, lightning bolts. However, you will certainly not find these lightning bolts anywhere else in the musical world. These unique sound designs from Minarik once again push the envelope of tone both live and in the studio. A signature look that you come to expect from Minarik that will command attention both visually and audibly. From devastating heavy tones to the angelic vocal tones of an expertly mic'ed acoustic, the Absinthe delivers.

Super Custom Series guitars start as low as \$3,299.



Absinthe<sup>®</sup>

# Acoustic Series

Craftsmanship and knowledge are the key to a Minarik acoustic. Pre-World War II building techniques insure the hey-day of acoustic guitars lives on in this very special branch of Minarik. From 300 year old Brazilian rosewoods, koa woods, bear claw sitka and Adirondack spruce, this is the acoustic guitar for those who want to treat themselves to something really special.

Super Custom Series guitars start as low as \$3,299.





# Diablo<sup>®</sup>

This guitar is a masterpiece of design. With stunning asymmetrical features, the Diablo commands attention on stage or sitting in your lap. Smooth where it rests across your leg and radical where it counts visually. Custom Tone Chambering gives this instrument a resonance found only in this model.

Studio X-Treme Series guitars start as low as \$1,199.

Super Custom Series guitars start as low as \$3,299.

The unique tone that is a finely crafted body with an elegantly carved, bolted on neck, has been a staple for country, rock, jazz, blues and everything in between. Minarik has elevated that classic tone to a level that will have guitarists re-discovering their passion for that signature sound. Introducing the Minarik Drifter. The Drifter features our proprietary Tone Tail Engineering so treat yourself to something special, both in design and sound, get into a Drifter.

Super Custom Series guitars start as low as \$3,299.



*Drifter*®

# Effin<sup>®</sup>



Our Minarik Effin was designed in the school of more is more. More body mass equals more intricate chambering inside the body, longer sustain and amazing tone.

This sonic juggernaut appears to be soaring through space and time with its classic neo-retro shape and its art nouveau influence. All of Minarik's Tone Tail Engineering is at work on our Effin guitars and basses. Whether you're on a stadium tour or recording in the studio, the Minarik Effin will transport your sound in cool retro style.

Super Custom Series guitars start as low as \$3,299.



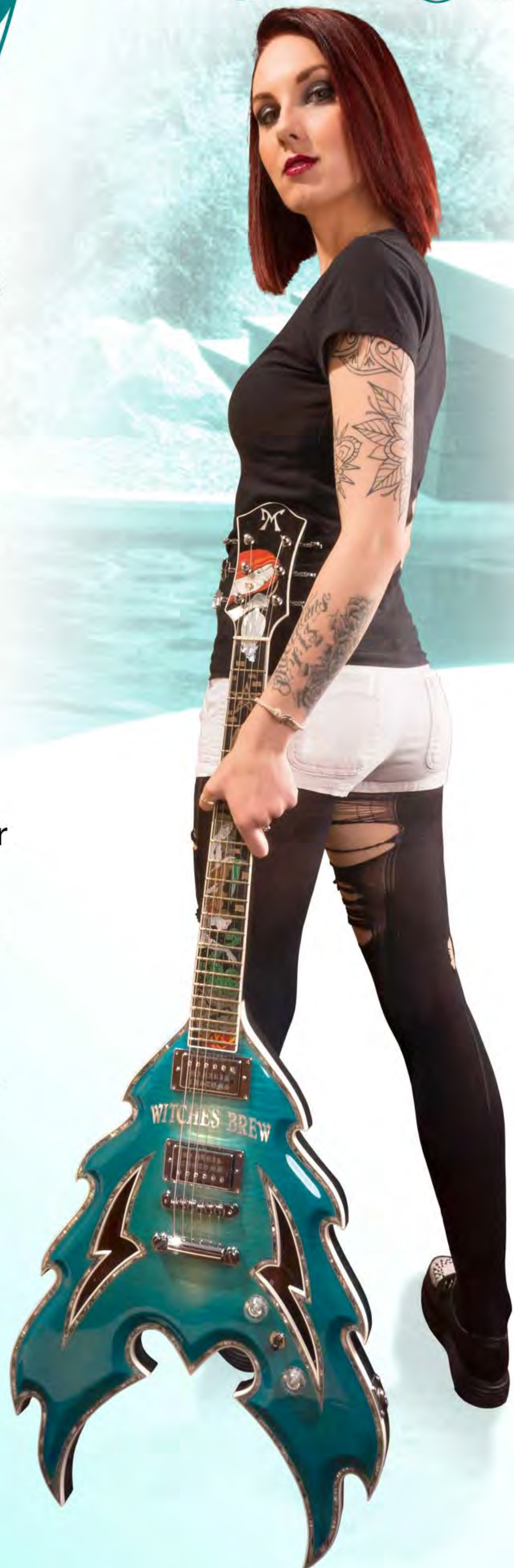
The Minarik Firebolt redefines the look and tone of V shaped guitars. The width of this guitar is key to generating its massive tonal spectrum. The chambers on the inside of the Firebolt are different from left to right, and have been custom carved to allow massive amounts of acoustic volume to be pushed out of the signature lightning bolt F-holes. This acoustic volume translates into mind blowing amounts of sustain and power, while the neck thru tone bar guarantees intense overdrive tone without unwanted feedback normally associated with F-hole style guitars.

The balance of the Firebolt is spot on. The looks of this guitar are pure Minarik. The wavelike sides flow towards the tips of the guitar, while the underside turns back on itself with two mirrored half circles.

Probably one of the most striking features on this guitar are the lightning bolt F-holes. This is another example of charting new visual and sonic territory by Minarik. The larger opening of the lightning bolt F-holes allow the volume controls to be installed without cutting a control plate in the rear. This allows maximum sound to be generated by the perfect uncut panels.

Super Custom Series guitars start as low as \$3,299.

# Firebolt®



# Furii<sup>®</sup>



The Minarik Furii features the proprietary Tone Tail Engineering found only on a Minarik. This feature adds more surface area to the left side of the guitar enhancing the low end frequency response. The Furii model also features the proprietary GEMINI pickguard. This unique and intricate pickguard design makes a bold statement that you are an artist who refuses to run with the pack. The design of the dual horns on the upper bouts allow full access to all areas of the neck. The comfortable body makes the Furii model ideal for studio and live situations. The Furii comes with beveled sides, allowing your arm to rest across with no discomfort.

Super Custom Series guitars start as low as \$3,299.

# Goddess®



The Minarik Goddess is a traditional double cutaway design featuring the proprietary Tone Tail Engineering found only on Minarik Guitars. This advancement in tone is visually enhanced by our Tone Tail which is featured at the bottom of the Goddess. Tone Tail Engineering offers an extra strip of wood on the side of the guitar where low frequencies require more surface area to resonate than the treble side. Combined with the Custom Tone Chambered body, this traditional shape offers tone, balance, and beauty that lives up to its name.

Studio X-Treme Series guitars start as low as \$1,399.

Super Custom Series guitars start as low as \$3,299.

# Halo®

This is founder M.E. Minarik's crowning achievement in traditional guitar design. This guitar defies description. It is not a single cut-away, nor a double cut-away..... It is a "zero cut-away." Instead of following the age old trend of cutting away wood to make room for your hand, Minarik went the total opposite direction. Look closely at the upper bouts, they actually come up towards your hand! The opposite of a cut-away..... a "zero cut-away!" This bold design actually allows more access to upper frets than any cut-away guitar without sacrificing the beauty and tone of the instrument. Halo features Minarik's proprietary Tone Tail Engineering and Custom Tone Chambering. Add Minarik's optional, proprietary Angel Step top for a truly heavenly sound. If you haven't picked up a Minarik Halo yet, visit your local music store and "get your wings."

Super Custom Series guitars start as low as \$3,299.



# Inferno®



The Minarik Inferno is the most scientifically advanced electric guitar ever built. This flagship design features Custom Tone Chambering throughout the entire body, even into the flame tongues. Every design feature on this body shape has a purpose. Increased mass on the left side of the body accents low frequencies, and reduced mass on the right side increases the voice-like high frequencies. Each individual flame tongue was designed to produce a certain frequency response, giving the Minarik Inferno the most balanced and widest tone spectrum, unmatched by any other guitar on the market today.

Studio X-Treme Series guitars start as low as \$1,399.

Super Custom Series guitars start as low as \$3,299.

# Inferno V<sup>®</sup>



The Minarik Inferno V offers guitarists a radical new guitar shape with a proprietary reverse 9 string design. The three high strings are doubled with octave strings that are tuned with three additional tuners located on the custom tuning block at the base of the guitar. The groundbreaking 9 string design allows heavy rock players to keep the 3 low strings free for power chords (something 12 and 10 string guitars are incapable of offering). Additionally, finger picking and folk chords take on a new brilliance by leaving the lower root notes singular and defined while making the higher notes double and octave, giving you a lush, full sound previously unavailable from electric guitars. The Custom Tone Chambering in the Inferno V is specifically designed to work in either 6 or 9 string configurations for versatile guitarists who play both clean and distorted.

Super Custom Series guitars start as low as \$3,299.

# Kraken<sup>®</sup>

For the player who desires a traditional shape combined with fast edges look no further than the Minarik Kraken. With an extended version of our proprietary Stinger Tail and internal chambering drawn from the Tone Tail Technology, this instrument will have people tracking you down after the show to find out what it was they've just seen and heard.

The tonal range flies from rock to jazz, metal to blues and everything inbetween, all within the same song if necessary.

In short, this guitar gets attention, Play a guitar that satisfies tonally and inspires visually.

Super Custom Series guitars start as low as \$3,299.



# Lotus<sup>®</sup>



This is the most technically "perfect" single cut-away guitar on the market. The traditional single cut-away guitar is severely lacking in the left-side surface area which is used to grab and articulate low-end frequency response. By incorporating Minarik Guitars proprietary Tone Tail Engineering on the bottom of the body and adding an additional tail on the upper left bout, the frequency problems with the traditional single cut-away guitar have been "corrected." The cut-away has been sharpened and enhanced to tie in with the two other "points" on the body, giving this guitar that signature Minarik design style.

Studio X-Treme Series guitars start as low as \$699.

Super Custom Series guitars start as low as \$3,299.



The Manta is the only guitar in the Minarik line that can "out-do" the Minarik Inferno in awesome tonal range. This guitar is the personal favorite of company founder M.E. Minarik due to its complex building technique and exquisite beautiful shape and sound. The inside of the body is literally like a beehive of chambers that has been tuned to make this shape sing like no other guitar you will ever hear. The arch top on a Manta, (yes, it's an arch-top) rises and dives along the curves of the body looking much like a birds shoulders. This very special arch top is extremely difficult to make and must be done by hand ALWAYS. This guitar has the largest tonal rainbow of any instrument on the market and is truly spectacular to see and play.

Super Custom Series guitars start as low as \$3,299.

# Manta®



# Masquerade



Following in the tradition of Minarik's distinctive Tone Tail designed series of instruments, the Masquerade is the next evolution of the double cutaway guitar. The Masquerade features Minarik's proprietary Tone Tail Engineering. This feature is most critical to the instruments low-end frequency response, allowing for the warm tonal response that has become synonymous with Minarik Guitars. Our Custom Tone Chambering has been modified to maximize the Masquerade body's natural resonance and it's all topped off with with a new variation on our proprietary Tone Tail design located at the base of the instrument. The waving lines of the unique elongated pickguard that envelopes the right side of the body, radiates inspiration from the Sacred Geometry Flower of Life, that it features on its base. If you're looking for that elusive inspirational sound for your next project, listen to and FEEL the Minarik Masquerade model.

Super Custom Series guitars start as low as \$3,299.

The Medusa model guitar takes all of our proprietary Tone Tail Engineering and Custom Tone Chambering and combines it all into one of the most sonically and visually important guitars Minarik has ever produced.

The longer, blade shaped lower left side of the body is an engineered bass frequency chamber. This chamber gives the Medusa a low frequency range that surpasses any guitar on the market. The scroll shaped lower right side of the guitar has

almost half the surface area mass. Combine this with Custom Tone Chambering and you have one of the most enhanced high frequency generating areas ever built. These two opposing engineering features give the Medusa a tonal range that has to be heard to be believed. The classic violin inspired C-cuts offer the perfect pedestal for the beautifully sculptured tuning fork upper bouts. Minarik again ventures into stylistic new territory by having the abalone binding leave the outside of the body to help create the "blade" look on the bass Frequency chamber's beveled edge.

Studio X-Treme Series guitars start as low as \$1,199.

Super Custom Series guitars start as low as \$3,299.



# Medusa®

# NiteCrawler<sup>®</sup>

The Minarik NiteCrawler is a visual and sonic Tour de Force. This instrument has a custom carved top and back reminiscent of the roaring jazz guitars of yesteryear (in the way of maple flames). This special carved top and back only covers 50% of lower portion of the body, while leaving the upper portion of the body a thin flat panel. The heavy acoustic tendencies of the upper flat top, combined with the "Mack truck" distortion potential of the carved and arched Lower half of the body show Minarik is once again charting NEW sonic territory on both ends of the spectrum. This is the only guitar in the world with half an arch top, and half of a flat top on the same guitar. The sonic signature of this model is pure Minarik. The shape and balance is spot on with Custom Tone Chambering. Plan a place in your guitar collection for this jaw dropping addition to the Minarik family of guitars.

Super Custom Series guitars start as low as \$3,299



# Obscura



The Minarik Obscura embodies the next evolution of Minarik's proprietary Tone Tail Technology. The body mass on the lower right bout creates rich, crisp tones unlike anything else in our current arsenal. The highly figured body and widened horn pieces amplify the frequencies in the upper bouts, allowing the Obscura to cut through the mix while keeping the warm tones that have become synonymous with that Minarik Guitar sound.

Studio X-Treme Series guitars start as low as \$1,399.

Super Custom Series guitars start as low as \$3,299.

# Orchid



This breathtaking guitar shape takes the design hallmarks of the revolutionary Inferno model and adds an artistic flair that is both organic and sonic. The tuning fork concept is at work on the Orchid's bottom forks. Along with the extended top horns, this insures the important vibrations are felt and heard. The shape of the Orchid is pure expression, a beautiful blend of flower, animal and imagination. The Orchid is not for everyone...

but not everyone can be original.

Super Custom Series guitars start as low as \$3,299.

The Samhain model guitar was designed to be the "heaviest" sounding guitar ever built. The majority of the mass of the body has been pushed down to the bottom of the guitar, allowing every low end frequency possible to be articulated through the larger mass now located in this crucial area, while the narrower waist and "tuning fork" horns channel the high end frequencies. This shape makes a devastating bass guitar, and a must have for artists that use drop tuning either live or in the studio.

Super Custom Series guitars start as low as \$3,299.

A woman with teal hair, wearing a black lace-up bodysuit and black thigh-high boots, is holding a Samhain guitar. She is standing in a field of tall grass and flowers, looking up at the sky. The guitar is a dark, multi-colored electric guitar with a unique shape. The background is a bright, sunny outdoor setting with trees and a clear sky.

Samhain®

The Minarik Sceptre is one of the purest and most dynamic expressions of tonal excellence you will find in a traditional guitar design, featuring Minarik's proprietary Tone Tail Engineering, increasing left-side mass crucial to sustaining enhanced low frequency response. Our Custom Tone Chambering has been engineered to fit the Sceptre's larger left and right sculpted upper bouts.

The Sceptre features Minarik's custom carved Cello Topp. This unique arch-top gently flows into a "dished" lip that follows the lower edge area of the instrument. The dished edge reduces towards the upper bouts, where a sculpted ridge cascades down the center of the upper bouts, diminishing effortlessly toward the mid point of the body. The Minarik Sceptre will earn a valued place in your musical endeavors both visually and sonically.

Super Custom Series guitars start as low as \$3,299.



*Sceptre*®



This beautiful and original version of our wildly popular Halo model features the visually stunning scroll in the upper left bout which adds an enormous amount of wood on the bass side. This takes the proprietary Minarik Tone Tail Engineering already in place on the Halo Model to another level with extra wood on the left, but up at the Top. This gives the Scroll a sonic signature unlike any of the other models including the Halo. Once again, new sonic territory is being charted by Minarik. The lines of this Model are Vintage, Elegant, and Pure Minarik. This is a must have for the traditionalist who is looking for new sonic brilliance, with smart beautiful, vintage lines that are completely new.

Super Custom Series  
guitars start as low as  
\$3,299.

*Scroll*®



The Minarik Trinity model has the unique honor of not only being one of the company's most intriguing shapes, but is also the only guitar in the world featuring a quadruple cut-away, an original Minarik design. Additionally, the Trinity features our proprietary Stinger tail.

The Studio X-treme Series Trinity also features our proprietary GEMINI pickguard, an intricate and expressive design that compliment the Trinity's bold original shape.

Studio X-Treme Series guitars start as low as \$699.

Super Custom Series guitars start as low as \$3,299.

# Trinity<sup>®</sup>



# VISIONARY

(vīzh-uh-NĒR-ēē);

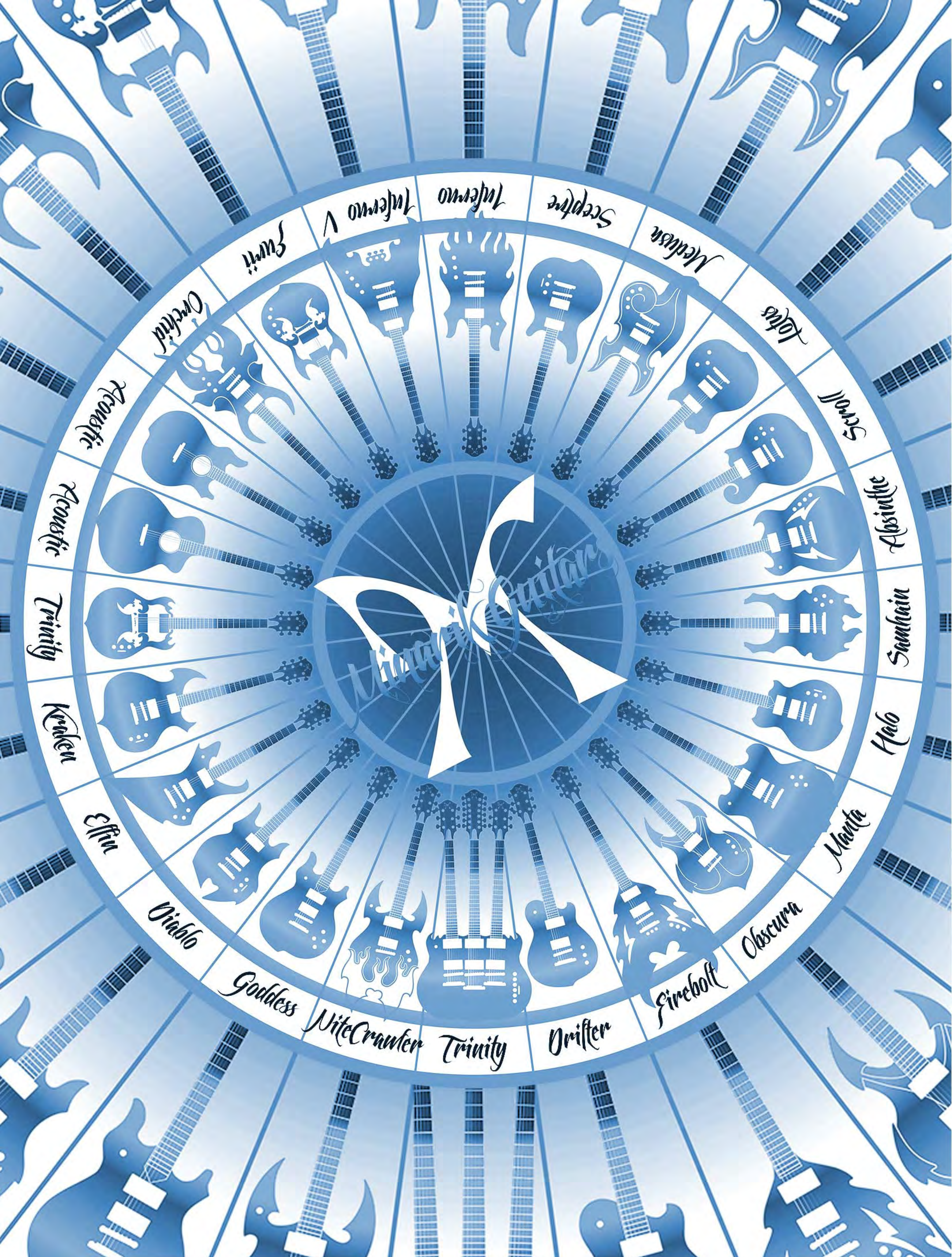


1, CONCEIVED by AN  
UNRESTRAINED IMAGINATION.

2, EXTRAVAGANTLY  
FANCIFUL;  
MARVELOUS.

3, CREATIVE.

See more @ [MinarikGuitars.com](http://MinarikGuitars.com)



See more @ [MinarikGuitars.com](http://MinarikGuitars.com)

©2018 Minarik Guitars. All rights reserved. Due to the limitations of the printing process, sample colors may not exactly match actual guitar finishes. Guitar specifications subject to change.

Select inlay and woodcarving produced by Arlene Goulart. [www.arlenegoulart.com](http://www.arlenegoulart.com)